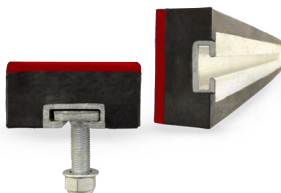


## Technical data sheet for impact bar germanShock<sup>®</sup> IP 45

| Product characteristics  |           |  |
|--|-----------|--|
|  | Unit      | Value  |
| Height   | mm        | 50 / 75 / 100  |
| Width  | mm        | 100  |
| Length   | mm        | 1,220 / 1,500  |
| <b>Specifications</b>  |           |  |
| Colour (HDPE Layer)  | -         | red  |
| Colour (Rubber)  | -         | black  |
| Hardness   | ° Shore A | 45   |
| Thickness of HDPE Layer  | mm        | 10   |
| <b>Installation</b>  |           |  |
|  | -         | Vulcanised aluminium fastening profile (see Picture 1) |
| <b>Fastening bolts</b><br>(for each impact bar, ask for quantity & dimensions) | -         | germanShock <sup>®</sup> IP B<br>(see Picture 2)       |

(HDPE - High Density Polyethylene)

Picture 1



Picture 2

